

KCOU Housing Guide

Timber Ridge Townhomes

2 Bedroom / 2 Bathroom

Townhome w/ Study
1,280 sq. ft. - \$670/month

2 Bedroom / 2 Bathroom

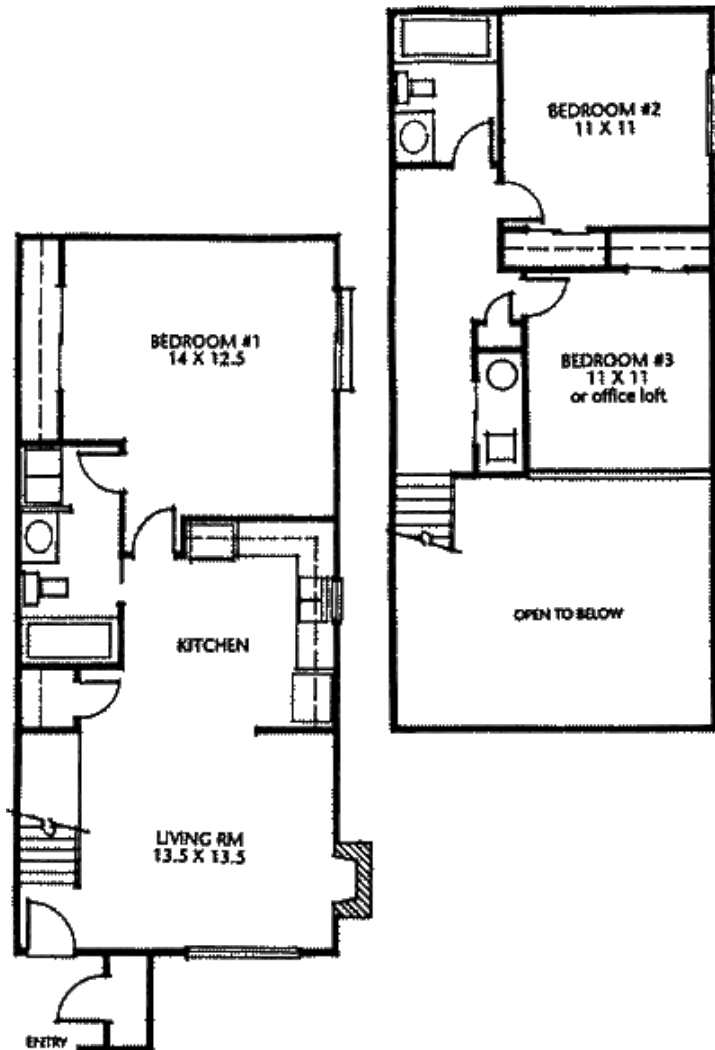
Luxury Townhome
1,280 sq. ft. - \$770/month

3 Bedroom / 2 Bathroom

Townhome w/ Garage
1,280 sq. ft. - \$720/month

Amenities

Spacious Bedrooms with Individual baths, Custom Kitchens with ceramic tile floor, Vaulted Ceilings, Fireplaces, Washer & Dryer Connections, Brick Veneer, Pets Welcome, Cosmo Bethel Park Location, Free Highspeed Wireless Internet, and Garages available for \$50/mo.



For more information, contact **Garry Lewis Properties** at **573.442.6478** to arrange a visit or get additional details or visit <http://www.corporatelake.com>!

How to get to Garry Lewis Properties Leasing Office

From Downtown

Travel south on Providence Rd.
Turn right onto Southhampton Dr.
Turn left onto Brandon Woods St.
Turn left onto N. Cedar Lake Dr.
Turn left at Santana Circle

